

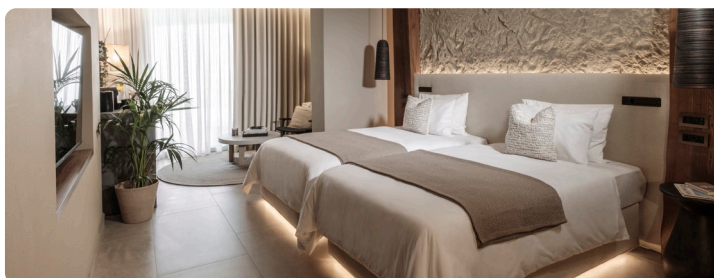
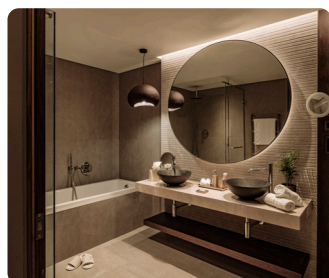
## Your path to *lasting transformation*

The Verdala Wellness Hotel is a five-star boutique retreat in Rabat, Malta, on the Tal-Virtù ridge near Mdina. An exclusive adults-only space within the AX Privilege Collection, it offers a serene, sophisticated haven for holistic wellbeing, personal renewal and profound restoration.

## Accommodation

Verdala Wellness Hotel offers 46 thoughtfully designed rooms, including Penthouses and a Designer Suite, balancing comfort with understated sophistication. Embracing AX Hotels' signature style and wabi-sabi philosophy, each space features curated wellness amenities, natural materials and restorative details for an enriching, rejuvenating stay.

ROOM TYPE	AVG. m <sup>2</sup>		KEY ROOM FEATURES
	INTERNAL	OUTDOOR	
9 Comfort Rooms	43	18	Bath, balcony, inland view
12 Deluxe Rooms	51	42	Bath, terrace with sofa, valley view
22 Junior Suites	57	102	Bath and shower, large terrace with hot tub, hammock and sofa, living area, valley view
2 Penthouse Suites	56	196	Top floor, bath and shower, large terrace with hot tub, hammock and sofa, living area, kitchenette, valley and landscape view
1 Designer Suite	102	179	Unique design, top floor, bath and shower, large terrace with hot tub, hammock and sofa, living area, valley and landscapes view



## In-Room Features and Amenities

Every room incorporates carefully selected amenities designed to enhance guests' wellness experience.

- Wellness minibar
- Tea station with herbal blends
- Luxury vegan guest amenities
- Yoga mat
- Access to guided in-room yoga and fitness sessions
- Premium mattresses and pillows
- Hypoallergenic bedding
- Blackout curtains
- Soundproof apertures
- Central A/C and heating
- High-speed wireless internet access
- Flat-screen smart TV
- In-room safe
- Espresso machine
- Turndown service
- Laundry service



## Other information



24/7  
 reception



Free  
 Wi-Fi



Accessible  
 rooms



Two  
 Elevators





## V SPA facilities

Spanning 1,500 square metres, the 'V SPA' includes:

- Hammam
- Infrared cabin
- Sauna
- Salt cave
- Hot & cold baths
- 2 energy loungers
- Meditation zone
- Health & fitness centre
- Studio space for yoga, pilates and meditation
- 2 consultation rooms
- 7 treatment rooms

Tailored wellness treatments are created in consultation with each guest, guided by renowned specialists and coaches, to meet individual needs and enhance the overall wellness experience.

**Spa treatments:** contrast therapies, body treatments and rituals, aesthetic treatment, holistic experiences, holistic treatment and more.

**Physical and fitness sessions:** Physiotherapy and recovery, private movement sessions and studio sessions and more.

**Spa and indoor pool opening hours**

Daily from 08.00hrs – 20.00hrs

**Fitness centre opening hours**

Daily from 06.00hrs – 22.00hrs



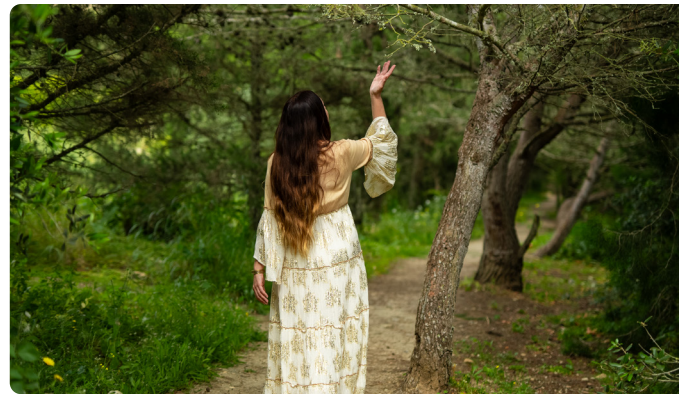
## Verdala Retreats

Every guest's journey is uniquely tailored to their individual wellbeing goals.

**Signature Retreats,** offers exclusive cultural experiences in Malta, enriched with wellness elements whether through mindful rituals, nature-based activities, or locally inspired healing practices.

**Seasonal Retreats,** embraces the rhythm of the island, incorporating local festas and experiences relevant to different times of the year, complemented by seasonal wellness traditions designed to harmonise with nature's cycles.

**Bespoke Retreats,** offers a tailored approach to wellness, allowing guests to design an itinerary that aligns with their personal needs. Choose from customised treatments and services designed to support your individual wellbeing.

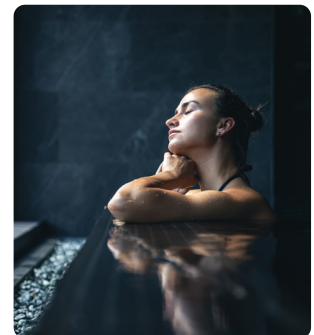
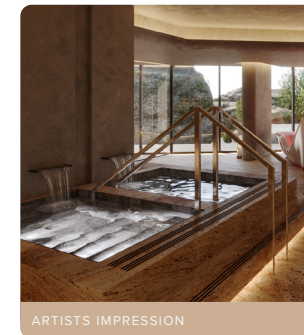


## Pools

**Indoor Heated Pool (38m<sup>2</sup>),** situated at level -1, is set within a unique caved design, creating an immersive and tranquil atmosphere. Enjoying natural daylight, the space offers a serene and relaxing environment, perfect for unwinding. Here, every detail is crafted to enhance your relaxation experience.

**Outdoor Jacuzzi (16m<sup>2</sup>),** situated at level -1, offers guests the opportunity to enjoy the outdoor setting in warmth and comfort throughout the seasons, ensuring a delightful experience year-round.

**Outdoor Heated Pool (78m<sup>2</sup>),** situated at level 0, features an infinity edge that merges with the horizon, offering uninterrupted views of Malta's landscapes. This serene setting is perfect for relaxation, inviting guests to take in the panoramic vistas. The pool is heated on a seasonal basis, ensuring comfort and enjoyment even in cooler months.





# Dining

An explosion of flavours rooted in Mediterranean ingredients, where purity is preserved and herbs subtly enhance each dish, a cuisine that celebrates balance, depth and the essence of natural elements.

## THE GRIFFIN BRASSERIE

The Griffin Brasserie offers a vibrant menu that balances wellness with indulgence and seasonal ingredients. Light options include a trio of cured seafood or beef tartare with fermented mushrooms and seaweed, while heartier dishes feature Bigoli with local prawns and more. The restaurant's terrace offers an ideal setting for al fresco dining, complemented by breathtaking views of Malta's landscape.

*Chapters - the private counter dining area* accommodates up to 18 guests, providing an exclusive culinary experience with a full view of our talented chef preparing each dish.

### Opening hours

Breakfast: 07.30hrs – 10.30hrs  
Lunch: 12:00hrs – 15:00hrs, served Saturday and Sunday  
Dinner: 18.00hrs – 22.00hrs

### Capacity

Indoors: 60 pax      Outdoors: 40 pax



## THE LIVING ROOM LOUNGE BAR

The Living Room Lounge Bar offers sweeping 180-degree views of Malta's iconic landscapes and is just as perfect for morning smoothies as it is for sunset cocktails and mocktails. A relaxed lounge where healthy meets indulgent, and every seat comes with a view. Drop by for a superfood salad, linger over afternoon tea, or toast the evening with our signature drinks. No rules, just good times.

### Opening hours

Daily from 11am to midnight (October to May)

## THE RIDGE POOL BAR

The Ridge Pool Bar is located next to the stunning infinity pool, offering a tranquil setting with outstanding views. The menu includes a variety of healthy options such as fresh salads, piadini and energy bowls, alongside classic poolside dishes. Beverages range from fresh juices and smoothies to cocktails and mocktails, all designed to capture the essence of the season.

### Opening hours

Daily from 11am to midnight (June to September)



# The Phoenix – A Multipurpose Hall

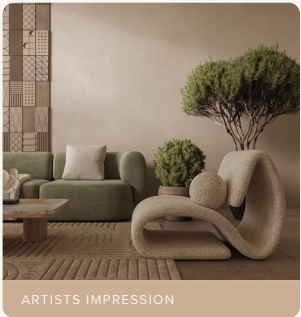
The Phoenix is a versatile, naturally lit multipurpose hall spanning 120m<sup>2</sup>, with a 2.4-metre-high ceiling and an 80m<sup>2</sup> outdoor terrace overlooking Malta's landscapes. Ideal for wellness sessions, workshops, corporate events and private gatherings, it offers a serene, adaptable setting with elegant indoor and outdoor spaces.

### Capacity

Stand-up: 180 pax	
Banquet: 80 pax	Classroom: 60 pax
Theatre: 140 pax	U-shape: 50 pax

# The Nook – A Relaxing Lounge

The Nook, situated on level 4, provides a quiet space for relaxation, featuring comfortable seating and a calm atmosphere. Guests can also enjoy the adjoining terrace, which offers pleasant views and a peaceful outdoor setting. Refreshments are served daily from 15:00hrs to 18:00hrs, enhancing the experience with a delightful touch.



# Parking facilities

The hotel garage offers cutting-edge technology, including number plate recognition for seamless and secure access. With a capacity for up to 20 vehicles, the facility is designed to provide hassle-free parking for both dining and staying guests. Additional features includes bicycle rental options, ensuring convenience for all visitors.

## Distances from major tourist highlights

- 1 RABAT VILLAGE CENTRE 800 m:** Rabat is a charming town known for its historical sites, including St. Paul's Catacombs, quaint streets and local bakeries.
- 2 MDINA 1 km:** Known as the "Silent City," Mdina is a fortified medieval town with narrow streets and historic architecture. A must visit.
- 3 ST. PAUL'S CATACOMBS (RABAT) 1 km:** These ancient underground burial sites date back to Roman times and offer insights into early Christian burial practices.
- 4 DOMVS ROMANA (RABAT) 1.3 km:** This Roman-era townhouse museum showcases intricate mosaics and artifacts, providing a glimpse into ancient Roman life in Malta.



**5 CRAFTS VILLAGE (TA' QALI) 3 km:** The Ta' Qali Crafts Village features local artisans producing and selling handmade glass, ceramics, jewellery and other crafts, offering a unique cultural shopping experience.

**6 BUSKETT GARDENS 3 km:** Buskett is one of Malta's only woodland areas, offering a lush, green escape ideal for nature walks and picnics.

**7 GIRGENTI (GIRGENTI PALACE AND VALLEY) 5 km:** Known for the scenic Girgenti Valley and the historic Girgenti Palace, this area is perfect for hiking and exploring Malta's rural charm.

**8 MOSTA DOME (ROTUNDA OF MOSTA) 6.5 km:** Known for its massive unsupported dome, the Mosta Dome is a must-visit site with historical and architectural significance.

**9 GOLDEN BAY 11 km:** Golden Bay is known for its sandy beach and is a favourite destination for sunbathing and water activities. An Ideal morning yoga spot!

**10 VALLETTA 13 km:** Valletta, the capital city of Malta, is renowned for its rich history, Baroque architecture and cultural sites.

**11 MARSAXLOKK (FISHING VILLAGE) 16 km:** Marsaxlokk is famous for its picturesque harbour, traditional Maltese fishing boats (luzzus) and vibrant Sunday fish market.

**12 BLUE LAGOON (COMINO)** To reach the Blue Lagoon, one would travel approximately 20 kilometres to Ċirkewwa, followed by a ferry to Comino. The Blue Lagoon is famous for its crystal-clear turquoise waters, making it a popular spot for swimming and snorkelling.

**13 GOZO** To reach Gozo, one can travel approximately 20 kilometres to Ċirkewwa, followed by a ferry to Gozo. Alternatively, one can take the fast ferry from Valletta. Gozo is a tranquil Mediterranean island known for its stunning landscapes, historic temples, charming villages, and crystal-clear waters, offering a peaceful escape from the hustle and bustle of Malta.

← Map of Rabat

## Useful information

Voltage	230V supply voltage • 50Hz frequency • G plug type
Currency	The official currency is the Euro (€)
Climate	Mediterranean climate • summer (Jun–Sept) temperatures often exceed 30°C (86°F) • winter (Dec–Feb) temperatures typically range between 10°C and 15°C (50°F to 59°F)
Time zone	Central European Time (CET) during winter (UTC +1) • Central European Summer Time (CEST) during summer (UTC +2)
Access	Malta International Airport is 12km away. Chauffeur service transfers can be booked through the hotel. • regular public bus transportation service is also available, more information on <a href="http://www.publictransport.com.mt">www.publictransport.com.mt</a>  Verdala Wellness Hotel is an adults-only retreat, welcoming guests aged 16 and over

GDS code • Amadeus (1A) – HO MLAVWH • Sabre (AA) – HO 614177  
• Galileo/Apollo (UA) – HO DH975 • Worldspan (1P) – HO 99954

## Contact details

### Main details

E: [verdalahotel@axhotelsmalta.com](mailto:verdalahotel@axhotelsmalta.com)  
T: +356 2148 4484 / W: [verdalahotelmalta.com](http://verdalahotelmalta.com)  
A: Triaq ir-Rghajja, Rabat RBT 2418

### Reservations

E: [reservations.verdala@axhotelsmalta.com](mailto:reservations.verdala@axhotelsmalta.com)  
T: +356 2262 3208

### Hotel Manager – Camille Brincat

E: [camille.brincat@axhotelsmalta.com](mailto:camille.brincat@axhotelsmalta.com)  
T: +356 7902 9659

### Wellness Team

E: [vspa.concierge@axhotelsmalta.com](mailto:vspa.concierge@axhotelsmalta.com)  
T: +356 2557 5010

### Sales Manager – Grace El Khoury

E: [grace.elkhoury@axhotelsmalta.com](mailto:grace.elkhoury@axhotelsmalta.com)  
T: + 356 7974 7944